



DOOR SEALS

Built with 2-stage EPDM rubber which is water and weather resistant from -100°C to +300°C.

HIGH CUBE

High cube (HC) containers are 1' higher (9'6"H) than standard height models (8'6"H). The additional height increases the total volume of the container, allowing for additional storage and clearance.

SECURE LOCKBOX

Features a thick metal casing to protect the padlock from bolt cutters and other break-in tools.

WEATHERPROOF VENTS

Help reduce heat, humidity and prevent condensation from forming.

36"-HIGH LOCKING BAR HANDLES

Make it easy to leverage your body weight to open or close the container doors, compared to standard 20"H locking bar handles.

PAINT

All our new shipping containers are painted with low VOC, water-based paint and zinc-enriched primer to ensure maximum resistance to the elements.

CSC PLATE

The CSC Safety approval plate guarantees that the container meets international safety standards and transport certifications.

MARINE GRADE FLOORING

Consists of 1.1" thick, 19-ply marine grade plywood that can support up to 19,530lbs of payload and is treated to withstand spills and other contaminants.

CORTEN STEEL

Known for its unique rust-inhibitive properties, it gives containers durability and resistance to the elements.

WEIGHT & DIMENSIONS

Exterior: 9'11"L x 8'W x 9'6"H
Interior: 9'6"L x 7'8"W x 8'10"H
Door Opening: 7'8"W x 8'5"H

Forklift pockets: 14"W x 4"H
Fork spread: 37"W center to center

Weight: 3,350 LBS
Payload: 30,600 LBS

MODIFICATION OPTIONS

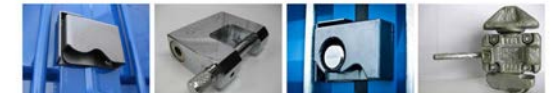


Paint Decals Rollup Doors Garage Doors



Ventilation Man Doors Windows Insulation

CONTAINER ACCESSORIES



Lockbox Padlock Puck lockbox Stacking pin



Pipe Storage Insta Vents Shelving Deck Mount