



**CORNER CASTINGS**

Easy stacking and lifting points.

**CORTEN STEEL**

Known for its unique rust-inhibitive properties, it gives containers durability and resistance to the elements.

**GRAY PAINT**

The gray tone of our rental fleet provides a professional and neutral appearance that allows the container to blend in with its surroundings.

**1 x 12' ROLL UP DOOR**

The corrugated steel roll up door installed on the container is 12' in length. It assists with access to the contents stored inside the container and facilitates easy loading and unloading of large-sized materials.

**WEATHERPROOF VENTS**

Help reduce heat, humidity and prevent condensation from forming during storage.

**FORKLIFT POCKETS**

Facilitate easy loading and unloading.

**MARINE GRADE FLOORING**

Consists of 1.1" thick, 19-ply marine grade plywood that can support up to 62,380 lbs of payload. ATS rental units are coated with polyurethane for increased durability and a cleaner finish.

**WEIGHT & DIMENSIONS**

Exterior: 20'L x 8'W x 8'6"H  
Interior: 19'4"L x 7'8"W x 7'10"H  
Door opening: 7'8"W x 7'5"H

Forklift pockets: 14"W x 4"H  
Fork spread: 82"W

Roll up door: 12'W x 6'9"H

Weight: 4,820 LBS  
Payload: 62,380 LBS

**OPTIONAL STORAGE ACCESSORIES**



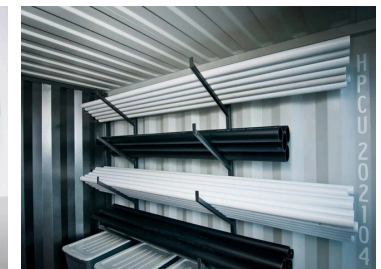
Padlock



Shelving



Stacking pins



Pipe rack system