

CORNER CASTINGS

Easy stacking and lifting points.

CORTEN STEEL

Known for its unique rust-inhibitive properties, it gives containers durability and resistance to the elements.

GRAY PAINT

The gray tone of our rental fleet provides a professional and neutral appearance that allows the container to blend in with its surroundings.

WEIGHT & DIMENSIONS

Exterior: 20'L x 8'W x 8'6"H
Interior: 19'4"L x 7'8"W x 7'10"H
Door opening: 7'8"W x 7'5"H

Forklift pockets: 14"W x 4"H
Fork spread: 82"W

Roll up doors: 8'W x 6'9"H

Weight: 4,820 LBS
Payload: 62,380 LBS



2 x 8' ROLL UP DOORS

The 2 corrugated steel roll-up doors installed on the container are 8' length each. It assists with access to the contents stored inside the container and facilitates easy loading and unloading of large-sized materials.

WEATHERPROOF VENTS

Help reduce heat, humidity and prevent condensation from forming during storage.

FORKLIFT POCKETS

Facilitate easy loading and unloading.

MARINE GRADE FLOORING

Consists of 1.1" thick, 19-ply marine grade plywood that can support up to 62,380 lbs of payload. ATS rental units are coated with polyurethane for increased durability and a cleaner finish.

OPTIONAL STORAGE ACCESSORIES



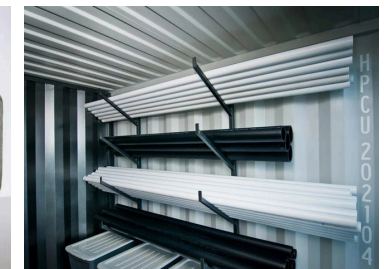
Padlock



Shelving



Stacking pins



Pipe rack system