

WEATHERPROOF VENTS

Help reduce heat, humidity and prevent condensation from forming.

SECURE LOCKBOX

Features a thick metal casing to protect the padlock from bolt cutters and other break-in tools.

CSC PLATE

The CSC Safety approval plate guarantees that the container meets international safety standards and transport certifications.

DOOR SEALS

Built with 2-stage EPDM rubber which is water and weather resistant from -100°C to +300°C.



OPEN SIDE

Open side containers have full width side doors which open fully to create a 20'L secure opening. It is especially practical for loading large pieces of equipment & machinery and for retail displays.

CORTEN STEEL

Known for its unique rust-inhibitive properties, it gives containers durability and resistance to the elements.

36" HIGH LOCKING BAR HANDLES

Make it easy to leverage your body weight to open or close the container doors, compared to standard 20"H locking bar handles..

MARINE GRADE FLOORING

Consists of 1.1" thick, 19-ply marine grade plywood that can support up to 60,190 lbs of payload and is treated to withstand spills and other contaminants.

WEIGHT & DIMENSIONS

Exterior: 20'L x 8'W x 8'6"H
Interior: 19'4"L x 7'6"W x 7'6"H
Rear door opening: 7'3"W x 7'1"H

Forklift pockets: 14"W x 4"H
Fork spread: 82"W

Side door opening: 19'2"L x 7'2"H

Weight: 7,010 LBS
Payload: 60,190 LBS

OPTIONAL STORAGE ACCESSORIES



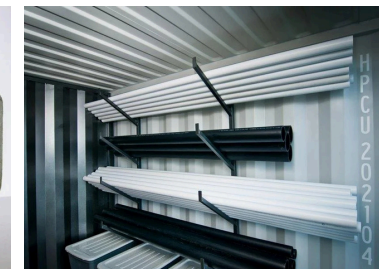
Padlock



Shelving



Stacking pins



Pipe rack system