

CORNER CASTINGS

Easy stacking and lifting points.

CORTEN STEEL

Known for its unique rust-inhibitive properties, it gives containers durability and resistance to the elements.

PAINT

The color of our rental fleet provides a professional and neutral appearance that allows the container to blend in with its surroundings.

2 x 7' SERVICE WINDOWS

The 2 corrugated steel roll-up windows installed on the container are 7' in length each. They offer a fast and professional solution for events. Each service window is lockable for added security.

WEATHERPROOF VENTS

Help reduce heat, humidity and prevent condensation from forming during storage.

FORKLIFT POCKETS

Facilitate easy loading and unloading.

MARINE GRADE FLOORING

Consists of 1.1" thick, 19-ply marine grade plywood that can support up to 62,380 lbs of payload. ATS rental units are coated with polyurethane for increased durability and a cleaner finish.

WEIGHT & DIMENSIONS

Exterior: 20'L x 8'W x 8'6"H
Interior: 19'4"L x 7'8"W x 7'10"H
Door opening: 7'8"W x 7'5"H

Forklift pockets: 14"W x 4"H
Fork spread: 82"W

Roll up window: 7'W x 3'9"H

Weight: 4,820 LBS
Payload: 62,380 LBS

OPTIONAL STORAGE ACCESSORIES



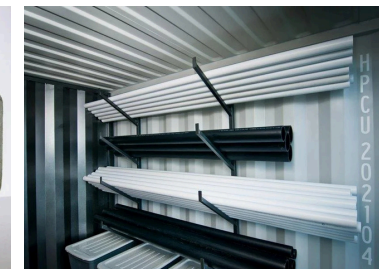
Padlock



Shelving



Stacking pins



Pipe rack system