

## DOOR SEALS

Built with 2-stage EPDM rubber which is water and weather resistant from -100°C to +300°C.

## SECURE LOCKBOX

Features a thick metal casing to protect the padlock from bolt cutters and other break-in tools.

## CSC PLATE

The CSC Safety approval plate guarantees that the container meets international safety standards and transport certifications.

## 2 OEM SIDE DOORS

The right-side wall of this one-trip container is equipped with two pairs of standard container doors. A lockbox is included with every door set for added security. This feature makes this container ideal for mini storage applications.

## CORTEN STEEL

Known for its unique rust-inhibitive properties, it gives containers durability and resistance to the elements.

## 36" HIGH LOCKING BAR HANDLES

Make it easy to leverage your body weight to open or close the container doors, compared to standard 20"H locking bar handles..

## MARINE GRADE FLOORING

Consists of 1.1" thick, 19-ply marine grade plywood that can support up to 61,560 lbs of payload and is treated to withstand spills and other contaminants.



## WEIGHT & DIMENSIONS

Exterior: 20'L x 8'W x 8'6"H  
Interior: 19'4"L x 7'6"W x 7'10"H  
Door opening: 7'8"W x 7'5"H

Forklift pockets: 14"W x 4"H  
Fork spread: 82"W

Side door opening: 7'8"W x 7'4"H

Weight: 5,640 LBS  
Payload: 61,560 LBS

## OPTIONAL STORAGE ACCESSORIES



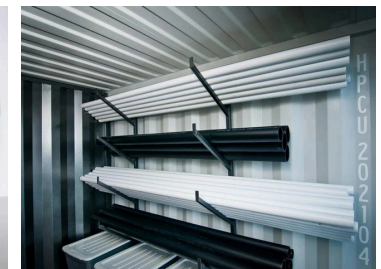
Padlock



Shelving



Stacking pins



Pipe rack system