

CORNER CASTINGS

Easy stacking and lifting points.

CORTEN STEEL

Known for its unique rust-inhibitive properties, it gives containers durability and resistance to the elements.

GRAY PAINT

The gray tone of our rental fleet provides a professional and neutral appearance that allows the container to blend in with its surroundings.

WEIGHT & DIMENSIONS

Exterior: 40'L x 8'W x 9'6"H
Interior: 39'5"L x 7'8"W x 8'10"H
Door opening: 7'8"W x 8'5"H

Forklift pockets: 14"W x 4"H
Fork spread: 82"W

Roll up doors: 10'W x 6'9"H

Weight: 8,575 LBS
Payload: 58,625 LBS



3 x 10' ROLL UP DOORS

The 3 corrugated steel roll-up doors installed on the container are 10' length each. It assists with access to the contents stored inside the container and facilitates easy loading and unloading of large-sized materials.

WEATHERPROOF VENTS

Help reduce heat, humidity and prevent condensation from forming during storage.

MARINE GRADE FLOORING

Consists of 1.1" thick, 19-ply marine grade plywood that can support up to 58,625 lbs of payload. ATS rental units are coated with polyurethane for increased durability and a cleaner finish.

OPTIONAL STORAGE ACCESSORIES



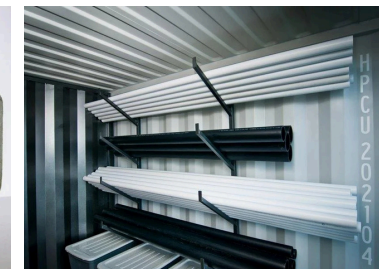
Padlock



Shelving



Stacking pins



Pipe rack system